



The Palmetto

MODEL NOS: FP601 – 5**

OWNER'S MANUAL

READ AND SAVE THESE INSTRUCTIONS

Important Safety Instructions

WARNING: To avoid fire, shock and serious personal injury, follow these instructions.

1. Read your owner's manual and safety information before installing your new fan. Review the accompanying assembly diagrams.
2. Before servicing or cleaning unit, switch power off at service panel and lock service panel disconnecting means to prevent power from being switched on accidentally. When the service disconnecting means cannot be locked, securely fasten a warning device, such as a tag, to the service panel.
3. Be careful of the fan and blades when cleaning, painting, or working near the fan. Always turn off the power to the ceiling fan before servicing.
4. Do not insert anything into the fan blades while the fan is operating.
5. Do not operate reversing switch until fan blades have come to a complete stop.

Additional Safety Instructions

1. To avoid possible shock, be sure electricity is turned off at the fuse box before wiring, and do not operate fan without blades.
2. All wiring and installation procedures must satisfy National Electrical Codes (ANSI/ NFPA 70-1999). Use the National Electrical Code if Local Codes do not exist. The ceiling fan must be grounded as a precaution against possible electrical shock. Electrical installation should be made or approved by a licensed electrician.
3. The fan base must be securely mounted and capable of reliably supporting at least 100 lbs. (fan and accessories not to exceed 35 lbs. or 16 kgs.). Outlet boxes are not acceptable for fan support. See page 5 of owner's manual for support requirements. Consult a qualified electrician if in doubt.
4. **CAUTION:** To reduce the risk of personal injury, mount the fan base to a ceiling joist or structural member using the hardware provided with your fan.
WARNING: Support Directly from Building Structure.
5. The fan must be mounted with the fan blades at least 7 feet from the floor to prevent accidental contact with the fan blades.
6. Follow the recommended instructions for the proper method of wiring your ceiling fan. If you do not have adequate electrical knowledge or experience, have your fan installed by licensed electrician.
7. Suitable for use with solid-state speed controls.
WARNING: TO REDUCE THE RISK OF SHOCK, THIS FAN MUST BE INSTALLED WITH AN ISOLATING WALL CONTROL/SWITCH.
WARNING: This product is designed to use only those parts supplied with this product and/or accessories designated specifically for use with this product. Using parts and/or accessories not designated for use with this product could result in personal injury or property damage.
WARNING: To reduce the risk of personal injury, do not bend the blade bracket (flange or blade holder) when installing the brackets, balancing the blades, or cleaning the fan. Do not insert foreign objects in between rotating fan blades.

LIMITED LIFETIME WARRANTY Extends to the original purchaser of a Fanimation Fan

1. LIMITED LIFETIME MOTOR WARRANTY - If any part of your fan motor fails, due to a defect in materials or workmanship during the lifetime of the original purchaser, Fanimation will provide the replacement part free of charge, when the defective fan is returned to our national service center. Proof of purchase is required. Customer shall be responsible for all costs incurred in the removal or reinstallation and shipping of the product for repairs or replacement.
2. ONE YEAR MOTOR LABOR WARRANTY - If your fan motor fails at any time within one year from the original purchase, due to defects in materials or workmanship, labor to repair the motor will be provided free of charge at our national service center. Purchaser will be responsible for labor charges after this one-year period. Customer shall be responsible for all costs incurred in the removal or reinstallation and shipping of the product for repairs or replacement.
3. If any other part of your fan fails at any time within one year after original purchase, due to a defect in materials or workmanship, we will repair, or replace, at our option, the defective part free of charge for parts and labor performed at our national service center.
4. Because of varying climate conditions, this warranty does not cover changes in the finish, including rusting, pitting, corroding, tarnishing, or peeling.
5. This warranty is void and does not apply to damage from improper installation, neglect, accident, misuse, exposure to extremes of heat or humidity, or as a result of any modification to the original product.
6. All costs of removal and reinstallation of the fan are the sole responsibility of the owner of the fan and not the store that sold the fan or Fanimation.
7. Fanimation reserves the right to modify or discontinue any product at any time and may substitute any part under this warranty.
8. Under no circumstances may a fan be returned without prior authorization from Fanimation. The receipt of purchase must accompany authorized returns and must be sent freight prepaid to Fanimation. The fan to be returned must be properly packed to avoid damage in transit; Fanimation will not be responsible for any damage resulting from improper packaging.
9. It is understood that any repair or replacement is the exclusive remedy available from Fanimation. There is no other expressed or implied warranty. Fanimation hereby disclaims any and all implied warranties, including, but not limited to those of merchantability and fitness for a particular purpose to the extent permitted by law. Some states do not allow limitations on implied warranties. Fanimation will not be liable for incidental, consequential, or special damages arising out of or in conjunction with product use or performance, except as may otherwise be accorded by law. This warranty gives you special legal rights and you may also have other rights that vary from state to state.
10. A certain amount of wobble is normal and should not be considered a problem or a defect.

WARNING

DO NOT INSTALL OR USE FAN SYSTEM IF ANY PART IS DAMAGED OR MISSING. THIS PRODUCT IS DESIGNED TO USE ONLY THOSE PARTS SUPPLIED DESIGNATED SPECIFICALLY FOR USE BY FANIMATION. SUBSTITUTION OF PARTS OR ACCESSORIES NOT DESIGNATED FOR USE BY FANIMATION COULD RESULT IN PERSONAL INJURY OR PROPERTY DAMAGE. CONTACT FANIMATION FOR MISSING OR DAMAGED PARTS.

(888) 567-2055

OR

(317) 733-4113

MAINTENANCE AND BLADE CLEANING

PERIODIC CLEANING IS RECOMMENDED USING A SOFT BRUSH OR LINT FREE CLOTH. ABRASIVE AND/OR NON-ABRASIVE CLEANING AGENTS ARE NOT REQUIRED AND SHOULD BE AVOIDED TO PREVENT DAMAGE TO FINISH. ALSO LIGHT DUSTING OF THE SELECTED BLADE IS RECOMMENDED. A FEATHER DUSTER WILL WORK BEST. PERIODICALLY TIGHTEN SET SCREWS ON SHAFT ADAPTERS (P608MAC AND P610MAC), BLADE HUBS TO SHAFT SCREWS AND HUB TO BLADE STEMS.



P680M**



P600D**



P600S**



1 1 ° 0



TUBE108**

1. LOCATE POWER

- a. POWER IS SUPPLIED BY PURCHASER/CONTRACTOR
- b. DISCONNECT POWER SUPPLY AT BREAKER BOX.
- c. A SINGLE PHASE 220 TO 240VAC ELECTRICAL FEED LOCATED AT THE CENTER OF THE MOTOR ASSEMBLY (P680M**)
- d. A SINGLE PHASE 220 TO 240VAC ELECTRICAL FEED LOCATED AT THE CENTER OF THE MOTOR ASSEMBLY (P680M**)
- e. A SINGLE PHASE ELECTRICAL FEED IS REQUIRED
- f. MOTOR IS SINGLE SPEED ONLY
- g. DO NOT OPERATE WITH ANY SPEED CONTROL

2. INSTALLATION NOTE

- a. IT IS RECOMMENDED THAT EACH CEILING MOUNT ASSEMBLY (P680M**, P600S**, AND P600D** IF REQUIRED) HAVE ¾" PLYWOOD BACKING SECURED TO A STRUCTURAL MEMBER FOR ADEQUATE SUPPORT.

3. MOUNT MOTOR ASSEMBLY OVER POWER SUPPLY TO COVER JUNCTION BOX.

- a. MARK FOUR MOUNTING HOLE POSITIONS AS REQUIRED
- b. DRILL PILOT HOLES
- c. START 2 SUPPLIED LAG BOLTS WITH WASHER IN THE OUTSIDE HOLES



- d. DO NOT COMPLETELY TIGHTEN LAG BOLTS AT THIS TIME
- e. CONNECT THE MOTOR WIRES TO THE SUPPLIED LEADS
 - i. BROWN TO "HOT"
 - ii. BLUE TO "NEUTRAL"
- f. POSITION MOTOR ASSEMBLY OVER THE FINAL TWO PREDRILLED HOLES AND FASTEN WITH REMAINING LAG BOLTS AND WASHERS
- g. SECURE ALL FOUR LAG BOLTS

4. LOCATE POSITION OF EITHER END OR CENTER ASSEMBLY (P600S OR P600D**)**

- a. MAXIMUM DISTANCE FROM MOTOR TO NEXT ASSEMBLY IS 9'11" CENTER OF BASE TO CENTER OF BASE OR
- b. MAXIMUM DISTANCE FROM MOTOR TO NEXT ASSEMBLY IS 10'5" FROM OUTSIDE EDGE OF BASE TO OUTSIDE EDGE OF BASE.
- c. MARK FOUR MOUNTING HOLE POSITIONS AS REQUIRED
- d. DRILL PILOT HOLES
- e. MOUNT NEXT ASSEMBLY IN DESIRED LOCATION AND TIGHTEN ALL FOUR LAG BOLTS SECURELY
- f. MEASURE DISTANCE FROM INSIDE EDGE OF COUPLER ADAPTER TO INSIDE EDGE OF COUPLER ADAPTER TO DETERMINE LENGTH OF ROTATING SHAFT (TUBE108**)



- g. CUT ROTATING SHAFT (TUBE108**) TO MEASURED LENGTH.
- h. ON SECOND ASSEMBLY LOOSEN THE TWO LAG BOLTS ON THE INSIDE EDGE OF THE BASE ENOUGH TO LEAN IT BACK.

- i. **INSTALL DESIRED NUMBER OF HUB ASSEMBLIES (P606**) ON THE ROTATING SHAFT (TUBE108**)**



- j. **SPACE HUBS (P606**) ALONG ROTATING SHAFT AS DESIRED AND SECURE WITH SET SCREWS**
- k. **INSERT ROTATING SHAFT IN THE MOTOR END COUPLER AND TIGHTEN SET SCREW.**
- l. **LEAN BACK SECOND ASSEMBLY AND INSERT ROTATING SHAFT (TUBE108**) INTO THE COUPLER ADAPTER.**



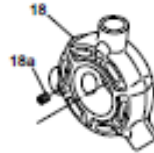
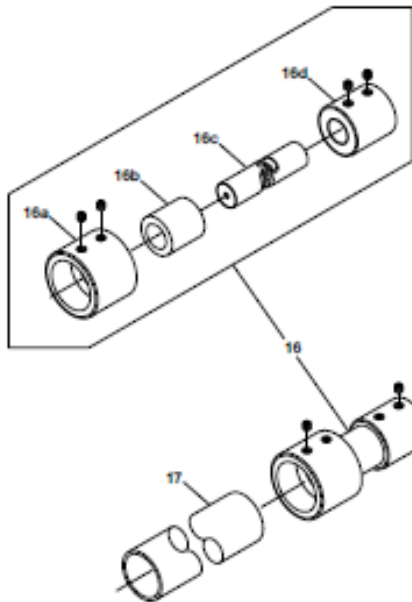
- m. **TIGHEN LAG BOLTS SECURELY ON THE BASE**
- n. **TIGHTEN SET SCREW ON COUPLER ADAPTER.**
5. **IF YOU ARE INSTALLING ADDITIONAL SECTIONS REPEAT STEP 4 FOR EACH**
 - a. **BE SURE THAT THE MIDDLE ASSEMBLIES ARE P600D** AND THE FINAL ASSEMBLY IS THE P600S****
6. **INSERT BLADE ASSEMBLY STEM INTO HUB ASSEMBLIES AND SECURE WITH SETSCREWS.**



- a.
7. **CHECK THAT HUBS, BLADE STEMS, BLADES AND ROTATING SHAFT (TUBE108**) SETSCREWS ARE SECURE**
8. **RESTORE POWER TO SYSTEM.**

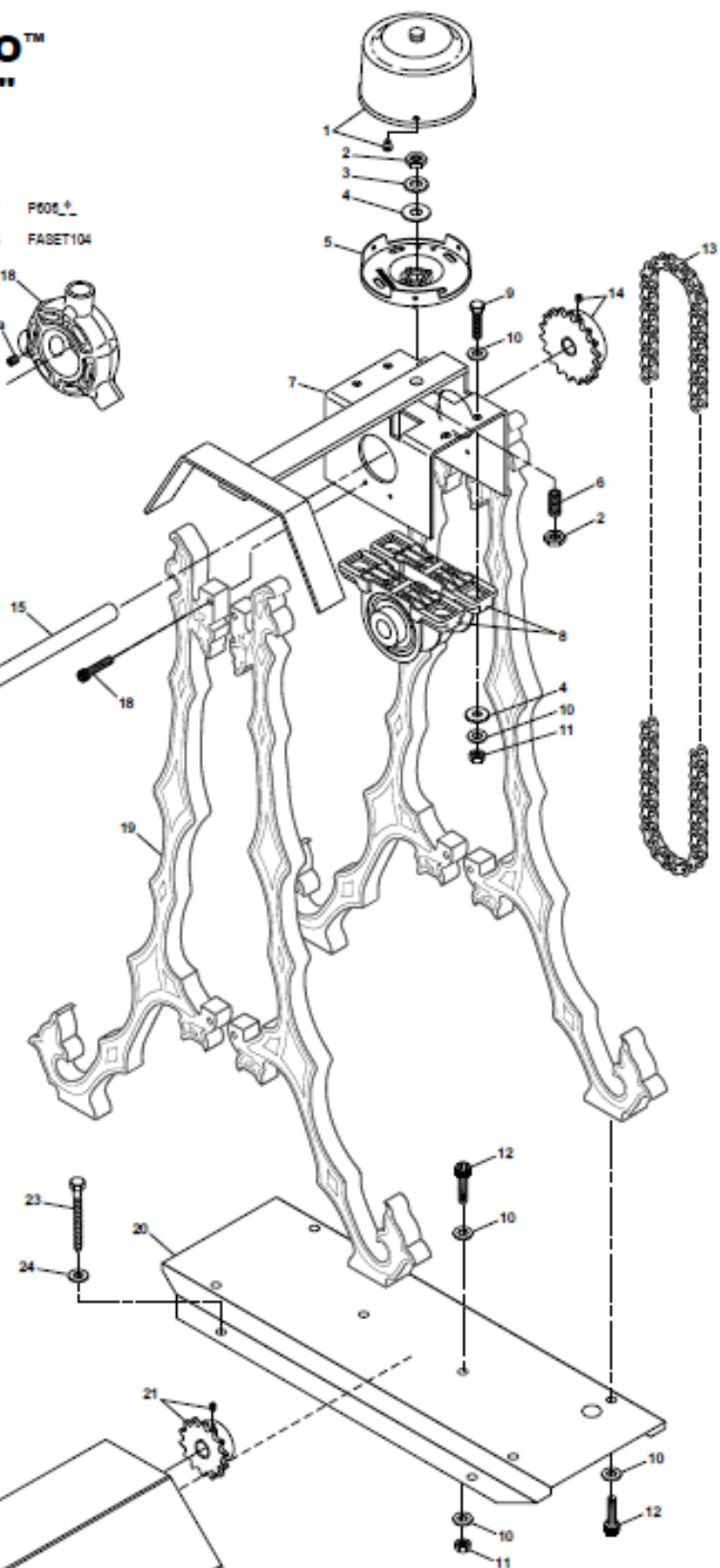
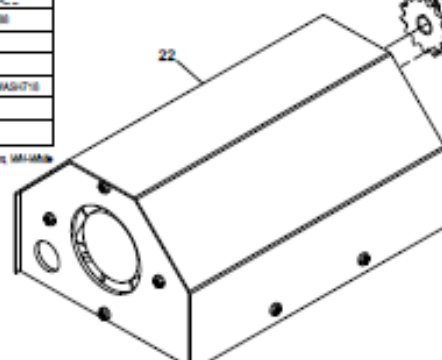
THE PALMETTO™ "MOTOR-END" P680M_ _

- 18 Hub
18a Set Screw, 1/4-20 x 1/4
1 P605_ _
4 FASET104



Ref No.	Description	Qty	Part #
1	Switch Cap	1	P605_ _
2	Nut	2	1
3	Flat Washer	1	1
4	Flat Washer, 5/16" Thick	5	FWA62022
5	Switch Cap Base	1	P605
6	Threaded Mopie, 1/8-27 x 3/4"	2	GR60723
7	Timing Support & Single Safety Strip	1	PS143Single
8	Bearing, 10" Pillow Block	2	GR60723
9	Hex Head Bolt, 1/4 - 20 x 1", Back	4	FW60212
10	Flat Washer, 1/4" Thick	10	FWA620716
11	Nut, Hex, 1/4-20, Back	6	FWN17110
12	Socket Cap Screw, 10-32 x 3/4"	6	FW602365
13	Chain	1	1
14	Gear, Sprocket, #35-10-11 teeth	1	GL303
15	Shaft, 1/2 x 1"	1	1
16	Combined Adapters	1	P605M26U
18a	U-Joint, Large	1	P605MAC
18b	Rubber Cover ?	1	1
18c	Joint ?	1	1
18d	U-Joint, Small	1	PS10MAC
17	Tube, 1/2" x 1-1/2"	1	10R_ _
18	Socket Cap Screw, 10-32 x 3/4"	4	FW602365
19	Support Leg	4	PS6L_ _
20	Base	1	P605_ _
21	Gear, Sprocket, #35-10-14 teeth	6	GL738
22	Single Drive "Punkin" Motor	1	1
23	Hex, Lag, 5/16 x 2", Back	4	1
24	Flat Washer, 5/16", Back	4	FWA620716

* Finish Codes: AD-Aspique Brass, B-Black, CR-Crown, MH-White



NOTE: The illustration shown is not to scale or its actual configuration may vary, the wires are removed for parts clarity